

# Aitor

[Marxeta Cristiana]

Dolçaina en Sol

Julio Micó

Measures 1-8 of the musical score. The piece is in 2/4 time and the key signature has three sharps (F#, C#, G#). The score consists of three staves: a treble clef staff, a grand staff (treble and bass clefs), and a bass clef staff. The melody in the treble clef staff features dotted rhythms and eighth notes. The grand staff contains a complex accompaniment with triplets and sixteenth notes. The bass clef staff provides a steady accompaniment with dotted rhythms and eighth notes.

Measures 9-17 of the musical score. The notation continues with similar rhythmic patterns and triplets. The grand staff accompaniment becomes more intricate, with overlapping lines and triplets. The bass clef staff continues with its dotted and eighth-note accompaniment.

Measures 18-26 of the musical score. A double bar line is present at measure 18. The melody in the treble clef staff is mostly silent, with rests. The grand staff accompaniment features a series of triplets in the bass clef staff, while the treble clef staff of the grand staff has a more active line with eighth notes and triplets.

Measures 27-35 of the musical score. The melody in the treble clef staff becomes more active, featuring eighth notes and triplets. The grand staff accompaniment continues with triplets in the bass clef staff and active lines in the treble clef staff of the grand staff.

36

A

45

54

B

60

De A a  
B i salta

De A a  
B i salta

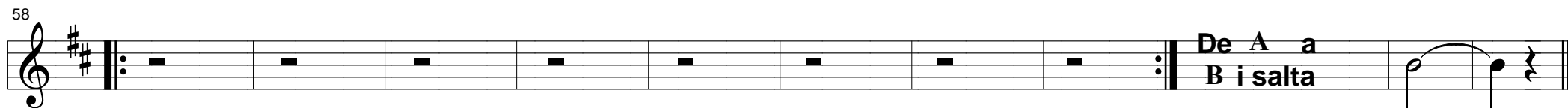
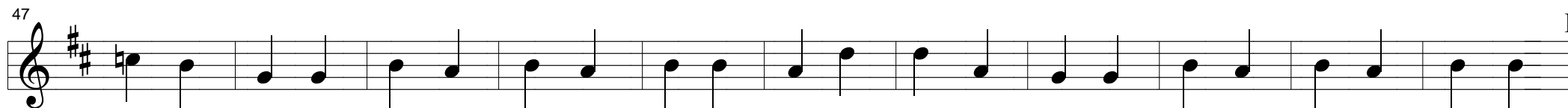
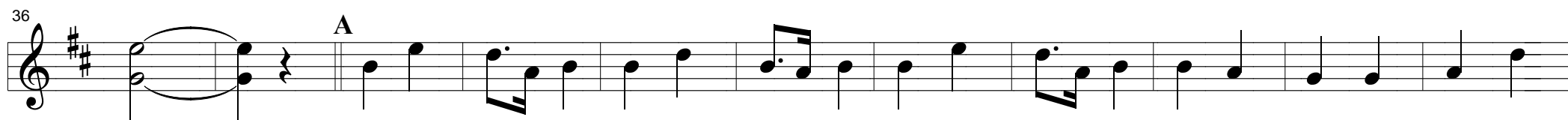
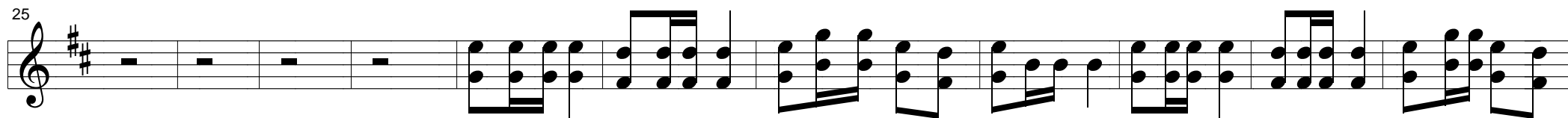
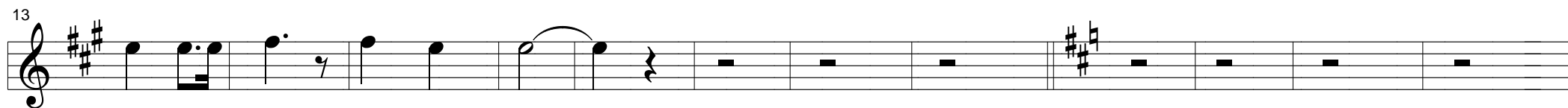
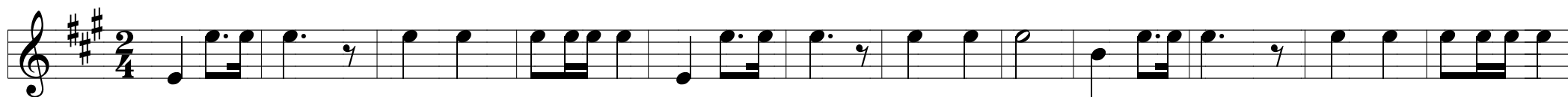
De A a  
B i salta

# Aitor

[Marxeta Cristiana]

Dolçaina en Sol 1

Julio Micó



# Aitor

[Marxeta Cristiana]

Dolçaina en Sol 2

Julio Micó

12

24

35

47

58

A

B

De A a  
B i salta

# Aitor

[Marxeta Cristiana]

Dolçaina en Sol 3

Julio Micó

9

18

27

36

45

54

63

De A a  
B i salta